

Phytohealth Corporation

Taiwan Stock Exchange (symbol:4108)

2024 Institutional Investor Conference

Established: 1998

Stock Exchange Listed: 2008

Capitalization: USD 70M

Chairperson: Yili Lee

CEO
Angel Lee

Statement

1. Apart from historical data, the matters listed in this presentation that are forward-looking statements may be subject to significant risks and uncertainties, which could result in differences between these forward-looking statements and actual outcomes.
2. The future projections presented in this document reflect the company's views as of the current date. However, the company is not obligated to update this information in case of any events or changes in the environment.
3. Without the company's permission, the copying, modification, recompilation, reduction, or transmission of any content in this presentation, or the use of any such content for commercial purposes, is strictly prohibited.
4. The content of this presentation includes all entities belonging to the consolidated financial statements.



Company Profile

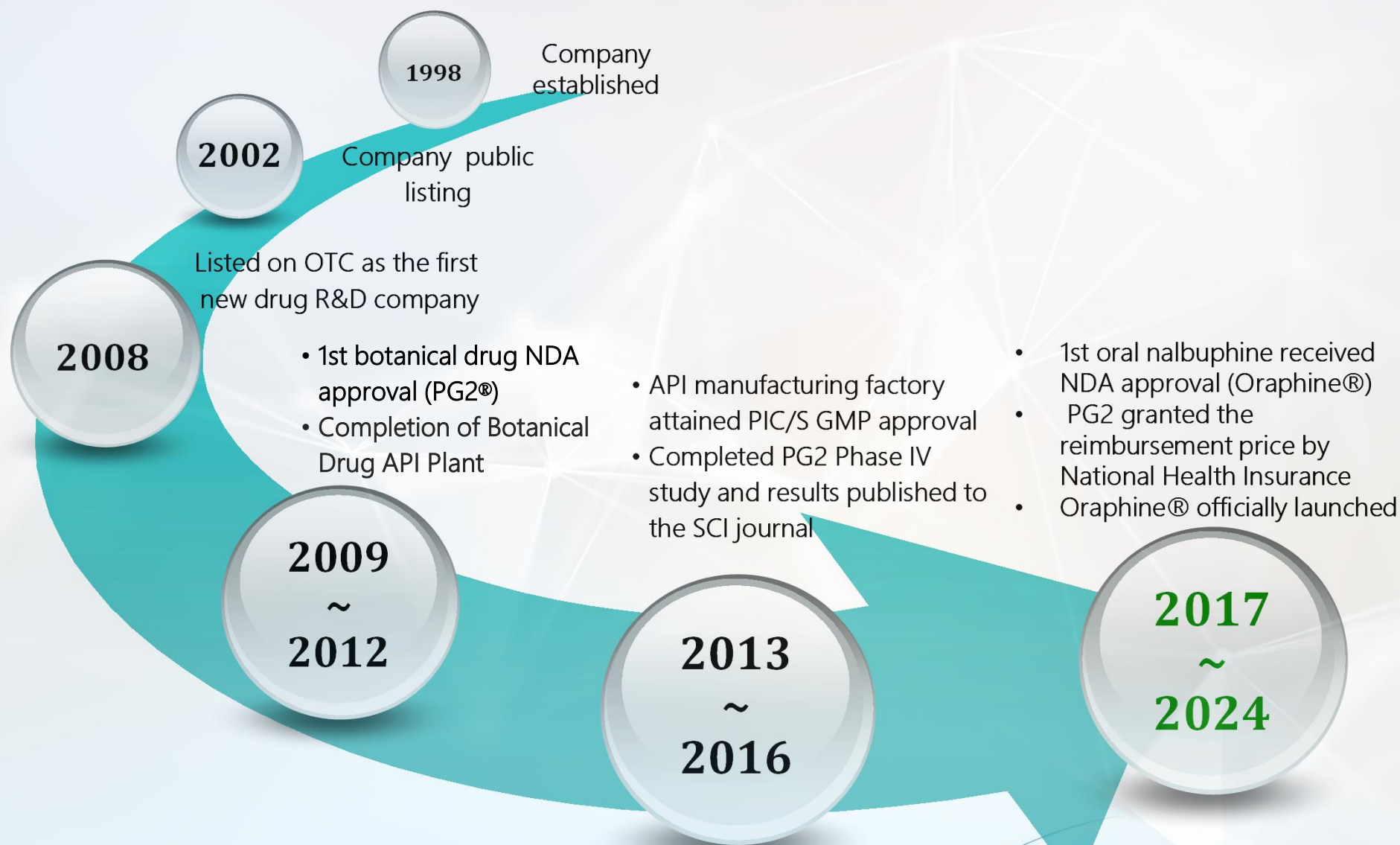


懷特生技新藥(股)公司
PhytoHealth Corporation





PhytoHealth aims to apply the latest pharmaceutical drug development techniques to innovate natural treatments used for thousands of years in Chinese botanical medicine practices to satisfy the unmet clinical needs.



Key milestones of Phytohealth Corporation



Phytohealth's new drug product development: 2 items have obtained TFDA drug licenses

	Product Function / Indication	Pre-Clinical	Phase I	Phase II	Phase III	NDA	Approval
上市	懷特血寶® PG2	The world's only prescription drug to treat "Cancer Related Fatigue"					
	懷特痛寶® Oraphine®	New analgesic (Nalbuphine) oral dosage form drug					
研發中 新藥	PHN031® Prevent osteoporosis	Completed U.S. FDA approval of Phase IIa clinical trial					
	PHN033 Treat diabetic nephropathy	Completed U.S. FDA approval of Phase IIa clinical trial					
	PG2(Combo Therapy)	Start Phase II clinical trial					
	PG2®Treating Cytokine Storm Caused by COVID-19	Start pilot clinical trial					



The global market for botanical and plant-derived drugs has show continual growth over the last decade and is showing promise to continue moving forward at steady pace.

*Botanical and Plant-derived Drugs: Global Markets, BCC Research



\$49B

USD in 2024

\$76B

USD by 2030

7.3%

CAGR

Key factors holding back botanical drug markets



Our Track Record of Success



Regulatory Approval

1st New TFDA License
For Prescription Botanical
Drug issued by TFDA
(April, 2010)

1st PIC/S GMP Certified
Botanical Drug API Plant
Certified by TFDA
(September, 2016)

2 of 10 New Drugs
approved by TFDA
developed by PhytoHealth



Evidence of Efficacy

24 Research Articles
on PG2 found in top 25%
Leading Medical & Cancer
Journals

323 Trial Subjects
in a successfully
conducted randomized,
double-blind, multi-center
clinical trial

20 Clinical Data Reports
presented to world-
renowned medical society
including ASCO, MASCC,
WCP, and TJCC



Market Growth

**PG2 is reimbursed by Taiwan
National Health issuance. the 1st**
botanical drug reimbursed by
NHI(2021.3)

PG2 has been adopted by
70 medical institutions
18 Medical Centers
46 Regional Hospitals

**Continuous accumulation of clinical
experience in cancer-related
fatigue**

700+ Oncologist
19,000+ Patient experience
125,000+ Continuing education
for medical staff



Sharing our Value Chain



懷特生技新藥(股)公司
PhytoHealth Corporation



2023-2024 Key progress



懷特生技新藥(股)公司
PhytoHealth Corporation

**1. The results of the study on the prolongation of overall survival (Overall Survival) of patients with locally advanced esophageal cancer using PG2 Combination with preoperative Chemoradiotherapy.
Published at 2024 ESMO (European Society of Clinical Oncology)**



Published at ESMO Annual Meeting in September 2024

BARCELONA 2024 ESMO congress

BARCELONA SPAIN
13-17 SEPTEMBER 2024



Clinical test :

- Period : 02.19.2019-02.06.2025
- Hospital : Ma Kai, Sanzong, Yadong, Shuanghe
- Case received : 48
- Assessable : 38

Immunomodulatory Effects and Improved Survival of PG2 plus Preoperative Chemoradiotherapy in Patients with Locally Advanced Esophageal Cancer

1435P

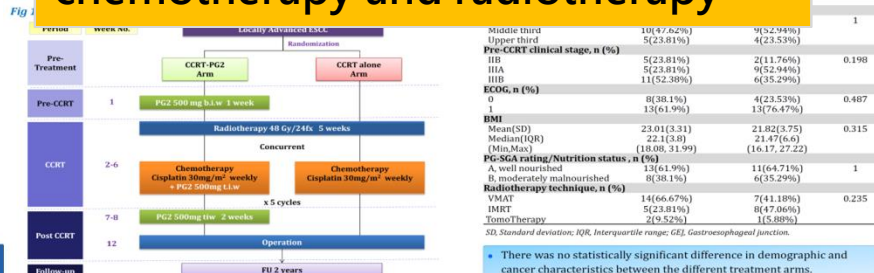
L.-M. Mok¹, W.-C. Huang¹, H.-C. Lin², Y.-J. Chen³, M.-L. Chan¹, Y.-L. Lai³, T.-W. Huang⁴, P.-Y. Chang⁵, Y.-F. Su⁶, C.-Y. Liu⁷, C.-H. Hsieh⁸, C.-J. Teng⁹, C.-Y. Wu⁹, C.-S. Chung¹⁰, L.-S. Wang¹¹, J.-T. Tsai¹², C.-T. Yeh¹³, T.-H. Tsai¹⁴

¹Division of Thoracic Surgery, Department of Surgery, Mackay Memorial Hospital, Taipei City, Taiwan, ²Division of Hematology and Oncology, Department of Internal Medicine, Mackay Memorial Hospital, Taipei City, Taiwan, ³Department of Radiation Oncology, Mackay Memorial Hospital, Taipei City, Taiwan, ⁴Division of Thoracic Surgery, Department of Surgery, Tri-Service General Hospital, National Defense Medical Center, Taipei City, Taiwan, ⁵Division of Hematology and Oncology, Department of Medicine, Tri-Service General Hospital, National Defense Medical Center, Taipei City, Taiwan, ⁶Department of Radiation Oncology, Tri-Service General Hospital, National Defense Medical Center, Taipei City, Taiwan, ⁷Division of Thoracic Surgery, Far Eastern Memorial Hospital, New Taipei City, Taiwan, ⁸Department of Radiology, Far Eastern Memorial Hospital, New Taipei City, Taiwan, ⁹Division of Hematology and Oncology, Department of Internal Medicine, Far Eastern Memorial Hospital, New Taipei City, Taiwan, ¹⁰Division of Gastroenterology and Hepatology, Department of Internal Medicine, Far Eastern Memorial Hospital, New Taipei City, Taiwan, ¹¹Division of Thoracic Surgery, Department of Surgery, Taipei Medical University-Shuang Ho Hospital, New Taipei City, Taiwan, ¹²Department of Radiation Oncology, Taipei Medical University-Shuang Ho Hospital, New Taipei City, Taiwan, ¹³Department of Medical Research and Education, Taipei Medical University-Shuang Ho Hospital, New Taipei City, Taiwan, ¹⁴Institute of Traditional Medicine, School of Medicine, National Yang Ming Chiao Tung University, Taipei City, Taiwan

Background

Esophageal squamous cell carcinoma (ESCC) treatment remains challenging due to its

Can regulate the cancer immune microenvironment
To effectively improve the overall survival rate
Conclusion:
「CRF」 Drug combined with chemotherapy and radiotherapy



Results

Fig 3. Overall Survival in the ITT Population

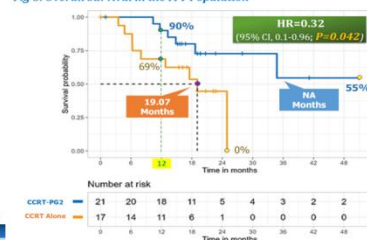
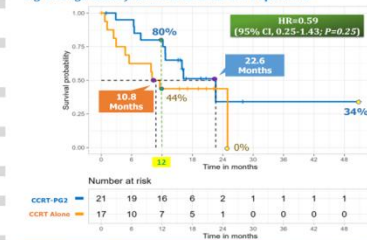


Fig 4. Progression-free Survival in the ITT Population



• CCRT combined with PG2 resulted in significantly superior overall survival (OS) compared to CCRT alone (P=0.042).

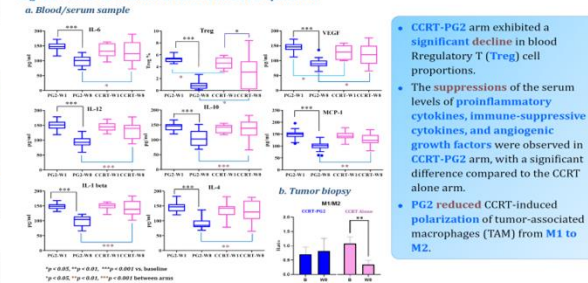
Table 2. Tumor Response in the ITT Population

Response	CCRT-PG2	CCRT Alone	P value
Clinical response	N=20	N=16	
Overall response, n (%)			0.388
CR	4 (20.00%)	3 (18.75%)	
PR	13 (65.00%)	7 (43.75%)	
SD	2 (10.00%)	2 (12.50%)	
PD	1 (5.00%)	4 (25.00%)	
ORR, n (%)	17 (85.00%)	10 (62.50%)	0.146
DCR, n (%)	19 (95.00%)	12 (75.00%)	0.149
Pathological response	N=20	N=10	
MPR, n (%)	20 (100.00%)	8 (80.00%)	0.103

CR, complete response; PR, partial response; SD, stable disease; PD, progressive disease; ORR, objective response rate; DCR, disease control rate; MPR, major pathologic response.

- The ORR of CCRT-PG2 arm was greater than that of CCRT alone arm by 20%
- Progressive disease made surgery unfeasible for 5% of cases in CCRT-PG2 arm, while 25% in CCRT alone arm.
- Primary tumor MPR rate was achieved by 100% in CCRT-PG2 arm and 80% in CCRT alone arm, respectively.

Fig 5. Immune Biomarker Results in the ITT Population



Funding

This work was supported by PhytoHealth Corporation, Taiwan.

Conclusions

PG2 combined with preoperative CCRT in advanced esophageal cancer has shown promising improvements in OS and modulation of the immune microenvironment.

Correspondence: Wen-Chien Huang MD/PhD (wjhuang0@gmail.com)

Presented by: Lai-Man Mok MD ORCID: [0009-0005-3090-1306] (<https://orcid.org/0009-0005-3090-1306>)

ESMO Congress 2024, Barcelona; Sep 13-17, 2024

2024 PG2 Domestic and International Academic Publishing

[PG2 合併化療於大腸直腸癌病患RWE]



ASSMN 2024
TSSMN 2024

The 3rd Congress of ASSMN in conjunction with IASGO-CME and Taiwan Surgical Society of Gastroenterology Winter Meeting
OCTOBER 25-27, 2024, TAIPEI, TAIWAN



TAIWAN
TAIPEI
THE GRAND HOTEL



46th ESPEN Congress
on Clinical Nutrition & Metabolism
Milan, Italy • 7-10 September 2024
CLINICAL NUTRITION: "THE" TRANSVERSAL SCIENCE



[PG2 健保乳癌RWE臨床效益]



2025 TJCC

Fueling Progress and Revolutionizing Cancer Care
May. 3 Sat - 4 Sun
臺大醫院國際會議中心
NTUH International Convention Center



TIBCS 2024
Taipei International Breast Cancer Symposium
Right Choice for Right Patient



October 26 (SAT.) > 27 (SUN.), 2024
7F, Taipei Nangang Exhibition Center, Hall 2



2. Strengthen clinical decision making in Cancer-Related Fatigue

92% of patients have cancer-related fatigue

92% 台灣癌症患者罹癌期間 有疲憊問題

- 第一次全台灣癌症病患「癌因性疲憊症」流行病學調查研究

– 期間為2015年2月至5月

– 共23家醫院進行研究

– 共1,207病患參與調查

– 問卷

癌因性疲憊(BFI-T, ICD-10)

生活品質量表(FACT-G7)

癌症症狀困擾嚴重度量表

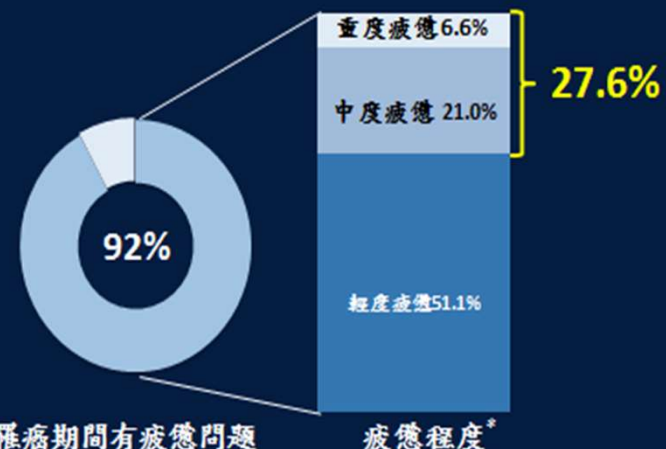


罹癌期間有疲憊問題

2015 Palliative Care in Oncology Symposium, Boston; Oct 9-10, 2015, Abstract # 155471. 2016 MASCC Poster # MASCC-0488.

10

大於1/4 癌症病患有中重度疲憊



* The three groups were calculated from the average of nine items from BFI and categorize into mild (<4), moderate (4-6.99), Severe (≥ 7).

2015 Palliative Care in Oncology Symposium, Boston; Oct 9-10, 2015, Abstract # 155471. 2016 MASCC Poster # MASCC-0488.

12

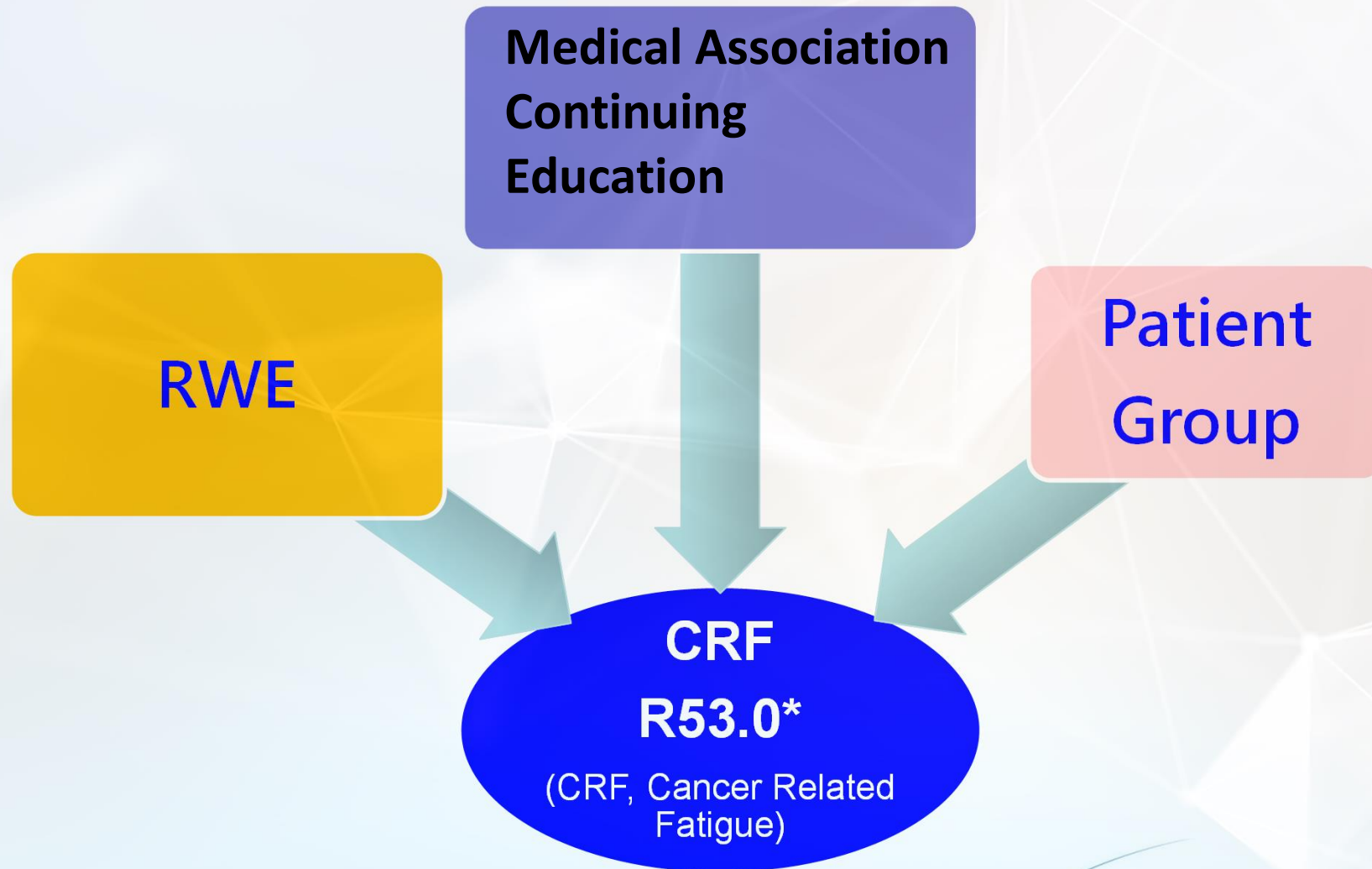
According to the "Guidelines of Management of Cancer related Fatigue¹"
Astragals polysaccharide injection (PG2[®]) is recommended to treat moderate to severe cancer related fatigue (Level 1A, Grade A Recommendation)

1. Management of Cancer Related Fatigue in Taiwan-An Evidence Based Consensus of screening, assessment and treatment: Japanese Journal of Clinical Oncology (JJCR 2022 Volume 53, Issue 1, January 2023). 2023. 11 台灣癌症安寧緩和醫學會 發表更新



懷特生技新藥(股)公司
PhytoHealth Corporation

Strengthen decision-making for CRF



3. Launch Oraphine® Globally



懷特生技新藥(股)公司
PhytoHealth Corporation

Oraphine[®] - A Novel Oral Analgesic

For Moderate to Severe Pain Management



全球第一個 Nalbuphine 口服劑型



專利技術提升口服生體可用率



服用後 15~30 分鐘內有效，Onset 快



呼吸抑制副作用具有天花板效應



低不良反應(相較於針劑劑型)
低成癮性(相較於mu鴉片類止痛劑)



非管制藥品(美國、歐盟及台灣) 不須管制藥品處方籤



Oraphine® 60mg@soft Capsule :

The ideal choice to treat moderate to severe pain

Oraphine® (nalbuphine HCl 60mg Soft Capsules)
懷特痛寶® 軟膠囊
Easy way to end pain now

Relieving Pain
Brightening Lives

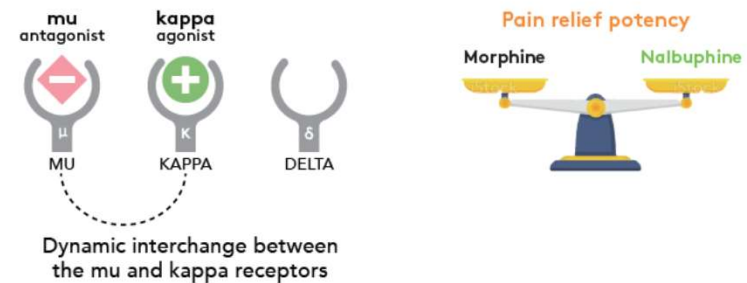
Relieve moderate to severe acute pain

PhytoHealth

Oraphine® is the first choice of oral analgesia for moderate to severe pain because it provides rapid onset, powerful efficacy and better safety profile.

Unique mechanism of action¹

- Mu-opioid receptor (MOR) antagonist and Kappa-opioid receptor agonist
- Low addiction and high safety when compared to MOR agonists
- Pain relief potency is approximately equivalent to morphine



- Now in use in major hospitals in Taiwan



4. Enter health care with the spirit of new drug research and development

黃耆多醣 3.0

超進化

精製黃耆多醣

注射型 迅速吸收

口服型 長期調理

高效品種 / 高純化精製技術

→ 精製出更多**高效**多醣分子

→ 注射劑取得藥證 · 納入健保



黃耆多醣
2.0

黃耆萃取 (含科學中藥)

僅破壁萃取，未針對有效成分純化
→ 多醣純度低且雜質多



黃耆多醣
1.0

黃耆飲片

無效品種* / 未破壁萃取
→ 多醣溶出率極低



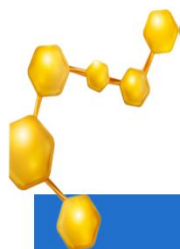
*台灣市售92.5%皆非藥典指定之有效品種

 懷特新藥

Western
medicine
clinical

Traditional
Chinese
medicine
health care

Food supplement
concept



Indena S.p.A :

Signing of MOU to advance into the international market



- The signing of MOU and MTA 2024.2 between both parties was completed
- The two parties will jointly develop the plant extract raw materials developed by Phytohealth , Indena will assist in the subsequent EU inspection and registration and global cooperation

Financial information



懷特生技新藥(股)公司
PhytoHealth Corporation

「 Balance Sheet 」

Sound financial structure
1. Sufficient cash
2. Low debts ratio

(Expressed in Thousands of New Taiwan Dollars)

Account	113.6.30	%	112.12.31	%
CURRENT ASSETS	1,449,068	62	1,499,456	64
NON-CURRENT	895,190	38	851,055	36
TOTAL ASSETS	2,344,258	100	2,350,511	100
CURRENT LIABILITIES	48,863	2	57,378	2
NON-CURRENT	20,044	1	22,471	1
TOTAL LIABILITIES	68,907	3	79,849	3
Share capital - ordinary	1,986,189	85	1,986,189	84
Capital surplus and Others	(36,130)	(2)	(60,083)	(2)
Equity-Parent Company	1,950,059	83	1,927,106	82
Minority	325,292	14	343,556	15
Total Equity	2,275,351	97	2,270,662	97
TOTAL LIABILITIES AND EQUITY	2,344,258	100	2,355,511	100



Income statement

1. Net sales grew 6%
2. The increase in exp. is due to investment in research and development projects

(Expressed in Thousands of New Taiwan Dollars)

Account	113 1-6		112 1-6		+ -%
	(A)	%	(B)	%	(A-B)/B
Net Sales	76,713	100	72,370	100	6
Gross Margin	30,161	39	29,590	41	2
Operating Exp.	(106,438)	(139)	(81,534)	(113)	31
Operating Loss	(76,277)	(100)	(51,944)	(72)	47
Non-operating gain/loss	12,106	16	13,563	19	(11)
Net loss before income tax	(64,171)	(84)	(38,381)	(53)	67
Net loss-consolidated	(64,171)	(84)	(38,381)	(53)	67
Net loss-Parent	(43,824)	(57)	(22,490)	(31)	95
EPS	(0.22)		(0.11)		



The image features a complex, futuristic design in shades of blue and white. On the left, a globe is depicted with a grid overlay, and a circular logo containing a stylized 'R' is positioned above it. A bright, glowing beam of light originates from the logo and extends across the center. In the bottom right corner, a blue and white pill is shown, also featuring the 'R' logo. The background is filled with abstract patterns, including a circuit-like grid and a series of white dots connected by lines, suggesting a digital or scientific theme.

Thank You !